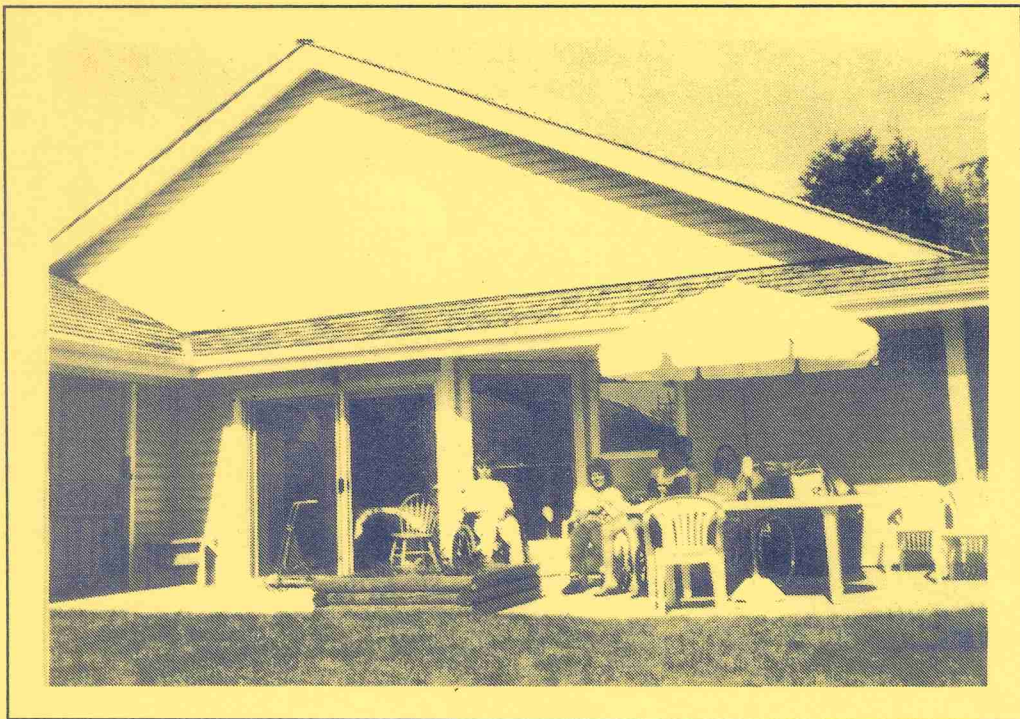


38th Annual Report

Lower Fraser Valley Cerebral Palsy Association

1990/91



38th Annual Report

Lower Fraser Valley Cerebral Palsy Association

1990/91

Lower Fraser Valley Cerebral Palsy Association

Honourary Members:

Mr. J. Barr
Mr. C. Coutts
Mr. H. Cuthbertson
Mr. E. Edwards
Mrs. W. Fayers
Mrs. R. Hougen
Dr. H. Kennedy
Miss D. Ladner
Mr. N. Sherritt
Mrs. D. Skelton
Mr. M. Terrace

Cover Photo:

Newton Home opened November 1990.
From left to right Kerry, Brenda, Kent and Lise.

1990/91 Board of Directors

Lucille Courchene - until September 1990
Diana Diggle
Karen Duddy - until September 1990
Zosia Ettenberg
Dave Goodwin
Martin Hyatt
Ken Kabush - until September 1990
Dianne Lewis
Carole Lind-Petersen - until September 1990
Steve Piskorik - until February 1991
Harold Pugash - joined November 1990
Norm Sherritt
Ken Spratt - until September 1990
Don Stewart - until March 1991
Lyn Stringer
Judy Taylor - joined January 1991
Les Ternent - until September 1990
Janette Thomas - joined October 1990
Marilyn Watts
Peter Winford

Officers as at March 31, 1991

| | | |
|-----------------|---|-------------------|
| Peter Winford | - | President |
| Dave Goodwin | - | Vice-President |
| Martin Hyatt | - | Treasurer |
| Zosia Ettenberg | - | Secretary |
| Dianne Lewis | - | Past President |
| Marilyn Watts | - | Director-at-Large |

President's Report

The Board, staff and management continue to work together to provide an excellent service to our clients. This year we have concentrated on team building and planning for the future.

We extend our thanks to those Directors who resigned this year, who contributed so much over the years; Karen Duddy, Past President, Ken Kabush for his dedication to making the Slide-A-Thon happen, Lucille Courchene who worked tirelessly on our behalf with Variety Club and especially Steve Piskorik who after 29 years on the Board is going to focus his efforts on Cerebral Palsy Sports Association. Thanks to you all.

We have an excellent balance of people on the Board--the newer members representing our current clients bring fresh ideas and perspective.

Joint sessions with staff have helped us understand the many programs and have led to the formulation of a Mission Statement and Strategic Plan. This will help us meet the challenges of rapid growth in our community.

Our financial position is being strengthened by careful fiscal management under the capable direction of Martin Hyatt, our Treasurer and Chairman of the Finance Committee. We are working towards Norm Sherritt's personal goal of establishing a Capital Foundation to provide a source of income for perpetuity.

The continued support of our government and private funding agencies is appreciated and essential to the continuance of our programs. In particular you should know that North Surrey Lions, B.C. Telephone Employees and Surrey Metro Savings are strong supporters. C.K.N.W. Orphans Fund again made a sizeable contribution towards our equipment and supply needs.

Our Auxiliary has donated in excess of \$600,000 over the years and their continued commitment

is responsible for a significant proportion of the program funding. They urge you to support them and share in the satisfaction of knowing you can make a difference.

As this will be my last year as President, I would like to acknowledge the support of all those who have given their time, especially Dave Goodwin who has graciously offered to assume the position of President for at least two years. Dave brings a wealth of experience and the compassion and logic of a social worker turned lawyer.

Your staff have shown enthusiasm and initiative beyond the normal expectations of a job. With the experience and skilled leadership of our new Executive Director, Ian Moody, I know we can look forward to a rewarding future for our organization and for our clients.

Respectfully submitted,

Peter J. Winford
President

Executive Director's Report

The year ending March 31, 1991 has been a most eventful one. As my first full year with the Association it was also a learning experience for me and I greatly appreciate the help, support, advice and guidance given to me by the Board and by the staff.

With restructuring of the Committees of the Board there has been a streamlining of the corporate operations which has permitted more time to be spent on in-depth review of various aspects of running this complex organization. The demands in time, energy and interest have increased as a result and we are fortunate to have such a dedicated Board of Directors. The Board also took significant pains in the development of our new long-term plan and we appreciated the input from the parents of the children we serve, the residents, staff, peer agencies and other major funding and community groups.

Continuation of the planning component has been followed through by the Executive Committee. Another feature of our Board meetings has been the introduction of education sessions where Board members have the opportunity to obtain a deeper understanding of various facets of our organization.

The Nominating and Society Committee, under the able chairmanship of Steve Piskorik and more recently Norm Sherritt, was extremely active in the earlier part of the year in reviewing and revising the Society's Constitution and Bylaws.

The Public Relations and Fund-Raising Committee has developed a number of new initiatives. During the year we created a videotape which will be available for community groups to access and become more familiar with our programs. Our new logo was unveiled in February. Thanks to a lot of hard work from this committee and in particular, Wendy Thompson who came on stream in a full-time

capacity last November in the area of financial development. Wendy has for several years successfully organized our gaming activity--so necessary to complement funding available from government grants. She is also developing a number a new fund-raising initiatives.

We are also significantly dependent on donations in order to sustain the current level of operations and programs. To all our donors, we are deeply indebted. We thank you for your generosity and recognition of the work we do.

Our Association is blessed with having such dedicated staff. We are most fortunate to have such a corps of individuals who provide their skills and services in such a caring and compassionate way. Their dedication goes far beyond the normal call of duty. They derive satisfaction from knowing they are doing a good job ensuring the task is accomplished without consideration of themselves. The very positive attitude which pervades our agency has been greatly enhanced by the creation of the position of Centre Coordinator this past year. We have been very fortunate to have John Maddalozzo fill this role. He has helped significantly in our objective of moving more into an interdisciplinary approach to therapy and the provision of services in a spectrum where we hope to move into a more family-centred model of service provision.

During the year the government recognized the creation of a separate Child Development Centre in Maple Ridge, an area where previously we had contracted with the government to provide therapy services. We were delighted to "spawn" yet another Centre which is now autonomous with its own Board of Directors. We received a small increment in staffing recognition from the Ministry of Health for occupational therapy, physiotherapy and speech therapy. We also achieved a first contract with the Ministry of Health in recognizing the cost of a full-time psychology

position to service community needs. This allowed us to increase the number of psychological consultations during the year from 125 to 166 with Ron Schmidt joining Dr. Glen Davies last fall.

We also now enjoy a greater time allocation by Dr. Weir, our Medical Director who plays a key role in the organization.

A number of joint department initiatives were developed including the Equipment Team and Equipment Loan Program--thanks to generous support from a number of major donors including Ronald McDonald Children's Charities, North Surrey Lions and the Variety Club; and the creation of a Feeding Team after much debate and planning. Our equipment technicians continue to display ingenuity in solving problems in customizing equipment.

In addition we have offered clinical placements for students in the therapy areas. As well we have generously supported our staff in development and educational opportunities to ensure all staff are current and our clients can benefit from the latest innovations, equipment and techniques. In conjunction with Upper Fraser Valley Neurological Society we were able to provide through federal government funding, a position of therapy aide to support the main therapy departments throughout most of the year. We also were grateful to receive federal grant monies under the Challenge 90 grant for summer student employment opportunities.

The Occupational and Physiotherapy Departments continue to provide contracted service to Rainbow Ridge in Whonnock and Surrey School Board.

With the development of ministerial protocols our task force on services to school-aged children appeared to have had some effect in raising the profile now compared to a few years ago. Our Association has been active provincially in attempting to bring this issue to the forefront and progress although slow, appears to be in the making.

Our staff continue to be recognized for their expertise in a number of areas including provincial representation on some national professional associations, publication in international journals and participation as presenters at major conferences--in particular Dr. Glen Davies in the area of child psychology and Laesa North as a clinical specialist in casting.

Your Association also sponsored through the Physiotherapy Department a highly successful provincial course held at Variety Child Development Centre on "Lower Extremity Biomechanics". It is our intention to continue to be in the forefront of educational offerings in the future and to share our vast wealth of knowledge with others.

The Speech Therapy Department has also implemented a number of new initiatives with the development of an Augmentative Communication Interest Group and running a sign language course in conjunction with the Parents' Committee. Thanks to a number of significant donations the department was able to make available a number of augmentative communication devices to children. B.C. Telephone Employees also donated two Apple computers for use by the Speech Therapy, Occupational Therapy and Preschool Departments.

Under the able leadership of Barb Yost, Recreation Services provided a range of alternate opportunities to the more traditional therapies. These included Adapted Aquatics and the swim team travelled to competitions in Edmonton, Alberta and Eugene, Oregon. The boccia team also participated in competitions within and outside B.C. A Dance Motivation Through Movement program was started and has been highly successful--emphasizing rhythm with movement while building coordination and agility. Adult aqua-fitness and school and preschool programs have also been made available.

While continuing to provide vital support to families as it has over the years, the Family Services Department made available a number of new opportunities for family participation including:

- Kidsgroup for children with disabilities aged 7-11
- Siblings group for brothers and sisters of clients
- workshops on sibling issues, At Home Program, etc.
- new parent library beautifully furnished, well stocked with books and tapes (and being very well used!)
- Special Sitters' Program - thanks to funding from Surrey Metro Savings

Our Preschool at the Centre has reorganized its method of operation and developed various activity centres during the year. The Discovery Program was amalgamated with the main program and significant benefit has been derived for those children with this improved integration. We look forward to the increased space for the Preschool--being added in Summer 1991.

We had many concerns throughout the year with the possibility of Lookout Preschool having to move because of the expansion of the North Delta Recreation Centre. It now appears the Preschool will remain there for the foreseeable future. Our thanks go to the Junior League of Vancouver and North Delta Dogwood Lions Club for their donation of a computer to Lookout. Lookout Preschool is participating in a research project with Douglas College on a child care initiatives fund project entitled "Making Friends".

Both preschools held a number of social and fun events throughout the year for the children and for the parents.

Our Residential Program has increased its capacity by over 50% in one year and we

extend our appreciation to Janet Robbins and the rest of the staff in the Residential Program for the loving care and attention they provide.

Support for many of the above programs has been provided to us by a number of individuals and groups. Without this support we would have had to curtail many of our activities. In particular I would like to recognize the Ministry of Social Services and Housing, the Ministry of Health, United Way and our Auxiliary for their continuing financial support of our operations. Also our large number of volunteers who directly give of their time and talents to help staff in the programs, and to our donors--corporate and individual.

Our programs also would not run without the administrative and clerical support so ably provided by our staff under the excellent supervision of Wendy Sellars, and our Accounting Department headed up by Alix Baziuk.

We also are dependent on the goodwill of our families--of the understanding of the parents who bring their children to the Centre. Wendi Macintosh who is Coordinator of the newly formed Parents' Committee has worked hard to develop a core group of individuals to help be supportive in whatever way they can. Parents are encouraged to find out more from Wendi at the Centre as to how they can help.

We are fortunate to have such a dedicated group of staff, volunteers and Board members who each carry out their role with a caring and understanding attitude. We have a unique group of individuals who work as a team for the common goal. We will continue to strive to do what is best for those whom we serve as we look to a very positive future for the Association.

Respectfully submitted,

Ian C. Moody
Executive Director

Medical Director's Report

New referrals to Variety Child Development Centre continue at the same rate as in previous years in spite of the hiving off of the Maple Ridge Clinic. This past year 144 children were seen for consultation. Of these 105 were admitted to the Centre's treatment program. The other 39 children had problems which could not be appropriately addressed by Variety Child Development Centre's programs. Whenever possible suggestions for suitable resources were given to the parents and to the referring physician. The Family Services Department was invaluable in searching out appropriate resources and in making follow-up phone calls. A few children were referred for further diagnostic work. I have made a policy during the past year of seeing almost all children referred to us rather than screening from the written referral information. The follow-up phone calls have indicated that most of the families are happy at having been seen.

A medical consultation is now part of the evaluation of feeding difficulties which occur in some of our children. This consultation is followed by participation in the multidisciplinary team meeting which is part of a feeding assessment done at the Centre. Children with the most complex eating and swallowing abnormalities are referred to Sunny Hill, Feeding Assessment Unit.

Limited medical follow-up is arranged for selected children and families. An ideal and a goal for the future is to have ongoing medical follow-up and input into treatment planning for all children at the Centre. Meeting this goal would necessitate more physician time than is currently available.

The valuable orthopaedic input given by Dr. R. Beauchamp continues at regular monthly clinics. Parents, therapists and children all appreciate and benefit from his care and knowledge.

I continue to enjoy the work at Variety Child Development Centre. The staff at the Centre are outstanding in their caring and their knowledge; having them as colleagues is a pleasure.

Respectfully submitted,

M.L. Weir, M.D. F.R.C.P.C.,
Medical Director

Volunteers

Whatever part of the Centre you pass through you are bound to meet a volunteer. Whether it's Ken in the workshop, Sophie in the Preschool, or George in the pool, they and dozens of individuals like them have one thing in common--the joy they get from giving their time and skills to help others.

Sometimes it's for an hour or two a week, or several hours a day--the jobs may be easy and fun while others can be boring or difficult and they may involve working directly with children and adults or working with wood, paper or coins.

At Variety Child Development Centre we are grateful to our "volunteer labour force". As members of the Board, Parents' Committee, workers in fund-raising events, the pool, workshop, preschool, office or the playroom--they all are valued for their contributions.

Thanks...volunteers! Sharing one's self is the greatest gift of all.

Respectfully submitted,

John Maddalozzo
Centre Coordinator

Residential Services

Newton Place, the Association's sixth home opened in November 1990. The house is situated in a residential neighbourhood in Newton, and is close to shopping, college and recreational facilities. Kent, Kerry, Lise and Brenda moved into Newton Place after living with parents and other caregivers. The residents attend work sites in the Cloverdale and South Surrey areas and enjoy various activities in the evenings and on weekends.

Funding for the Newton Place home was provided through B.C. Housing Management Commission and through the Ministry of Social Services and Housing. The home was designed by Jamie Martin, of Graph-Tech Design who also designed the Parkland View residence.

Some improvements were made during the year to the Villa, Old Yale Road and Bear Creek Villa, including fencing, new interior flooring, bathroom renovations, and a new front door at Old Yale Road. Further improvements are planned for this next year as these homes show inevitable signs of wear.

Residential staff at the six homes now number 60+, and they are a large component of the Association's overall staff complement. Senior staff at the homes have remained fairly constant, whilst there has been the expected turnover in part-time and relief staff.

Several staff training events took place throughout the year, including a two day team building workshop with Ridgetop personnel. Residential staff also attended management courses at the Justice Institute and courses in support worker training at Douglas College.

Some changes took place in Residential Program management at the end of 1990 when the Coordinator's position was reduced to four days per week and two part-time staff were hired to provide direct support to staff and residents at the children's homes, and Guildford

Glen and Bear Creek Villa. These changes have proved to be beneficial to the programs involved.

This has been a year of growth in Residential Services with the opening of Newton Place and with the establishment of the Parkland View home.

Respectfully submitted,

Janet Robbins
Residential Services Coordinator

Auxiliary

This year has been another successful year for the Auxiliary. With the dedication of our members we were able to participate in the local malls charity days, hold our annual November bazaar, and operate our three thrift shops to raise money.

Throughout the year we were also able to financially assist a number of clients of the Centre to participate in a variety of sporting events for people with disabilities.

And again, this year the Auxiliary made a substantial donation of \$55,000 to Variety Child Development Centre--a donation made possible only by a small group of very caring individuals.

Respectfully submitted,

Kathy Dye
President
Auxiliary of Lower Fraser Valley Cerebral Palsy Association

**Variety Child Development Centre
Client Statistics**

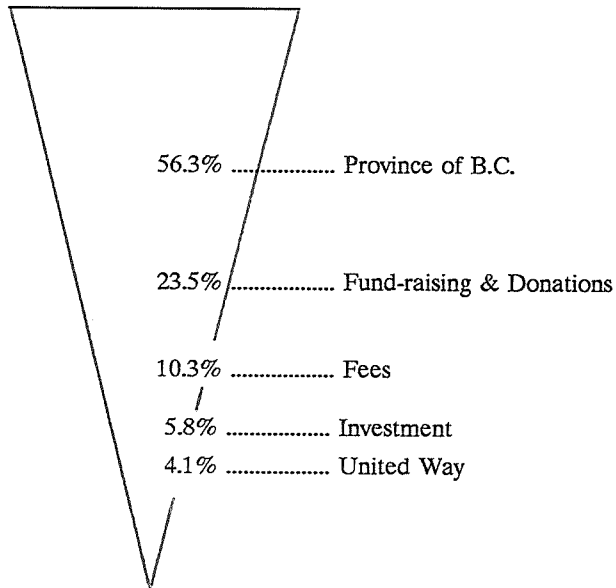
| | 1990/91 | 1989/90 | 1988/89 | 1987/88 | 1986/87 | 1985/86 |
|---|------------|------------|------------|------------|------------|------------|
| Number of new referrals received | 144 | 166 | 179 | 230 | 185 | 144 |
| Number of cases opened | 80 | 116 | 148 | 213 | 120 | 120 |
| Number of cases re-opened | 11 | 19 | 21 | 36 | 13 | 9 |
| Centre therapy caseload to March 31 | 469 | 451 | 418 | 486 | 383 | 386 |
| Recreational Services/Non-therapy Clients | 215 | 181 | 126 | 152 | 142 | 130 |
| School Consultations (Occupational Therapy and Physiotherapy) | 123 | 124 | 48 | -- | -- | -- |
| TOTAL CLIENTS RECEIVING ONE OR MORE SERVICES | 807 | 756 | 592 | 638 | 525 | 516 |

Statistical Summary by Service

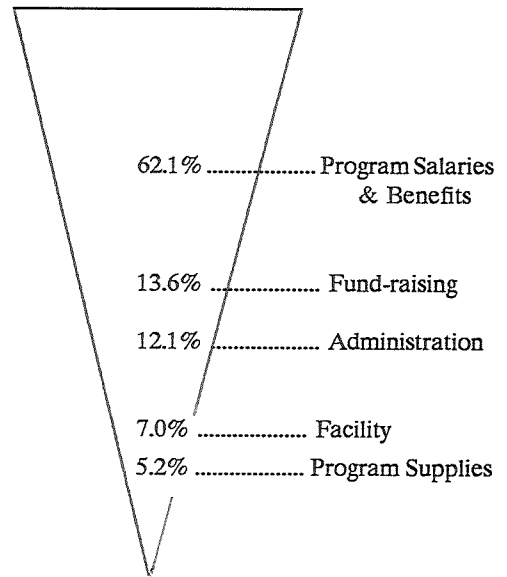
| | Physio-therapy | Occupational Therapy | Speech-Language Therapy | Preschool V.C.D.C. | Preschool Lookout | Family Services | Psychology | Recreational Services |
|--|----------------|----------------------|-------------------------|--------------------|-------------------|-----------------|------------|-----------------------|
| Registered caseload March 31 | 322 | 211 | 99 | 85 | 71 | N/A | N/A | N/A |
| Clients receiving service (Avg/mo.) | 232 | 111 | 48 | 37 | 16 | N/A | N/A | N/A |
| Admissions | 72 | 65 | 41 | 17 | 12 | N/A | N/A | N/A |
| Discharges | 52 | 25 | 19 | 20 | 16 | N/A | N/A | N/A |
| School Consulting Service | 43 | 80 | N/A | N/A | N/A | N/A | N/A | N/A |
| Total no. of persons with special needs receiving service in yr. | 417 | 316 | 118 | 40 | 19 | N/A | 166 | 305 |
| Families served | N/A | N/A | N/A | N/A | N/A | 360 | N/A | N/A |
| Total no. of non-disabled children receiving service (integrated programs) | N/A | N/A | N/A | 54 | 56 | N/A | N/A | 155 |
| Total Receiving Service | 417 | 316 | 118 | 94 | 75 | 360 | 166 | 460 |

Sources and Uses of Funds

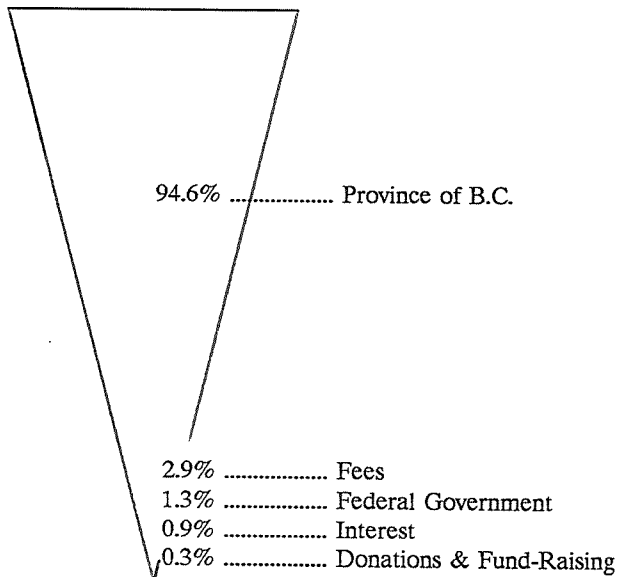
Variety Child Development Centre
Operating Budget Sources
Revenue \$2,490,162



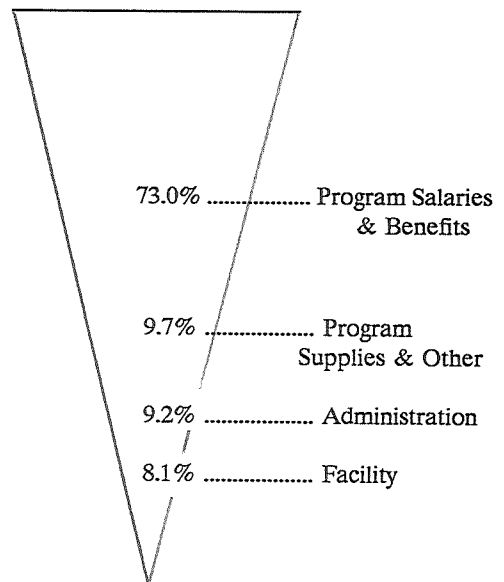
Variety Child Development Centre
Operating Budget Uses
Expenses \$2,491,184



Residential Services & Lookout Preschool
Operating Budget Sources
Revenue \$1,323,101



Residential Services & Lookout Preschool
Operating Budget Uses
Expenses \$1,281,777



DONATIONS

Sincere thanks to our many friends for their donations throughout the past year.

| | | |
|---------------------------|-----------------------|--------------------------|
| Betty Allen | Doris Gilchrist | Paul & Mary Odermatt |
| F.C.M. Anderson | Donna Gillen | Isabel M. Osborn |
| S. Bellamy | Charles Goetken | C. Pannekoek |
| Wally & Donna Berndt | N.J. Gouthro | Joan Parolin |
| E.J. Booth | Mary Green | G.L. Piper |
| Thomas Bowen | Keith Gregory | Pollock Enterprises |
| Thomas H. Brown | Verna Hansen | G.H. Polman |
| Marge & Fred Bryant | Anita Harper | Dean Raven |
| M. Burgess | T. Hazlett | Pierre Sache |
| B.M. Campbell | Peter Howard | Carol Sandhoff |
| R. Campbell | Iver Jensen | Mr. & Mrs. Z. Scibor |
| J. Cherkas | Mr. & Mrs. Ken Kabush | Dorothy Shepherd |
| Diane Cleary | Mr. & Mrs. Kapralik | Silver Blue Traders Inc. |
| E.W. Colquhoun | Ruth Kelly | Mrs. Doris K. Skelton |
| Mr. & Mrs. P. Comm | Vernon D. Kemick | Joanne Smith |
| Robert Dares | P.M. Koch | Robert & Lois Smith |
| K.M. Dewar | Mr. & Mrs. Ron Krause | Mr. Spalding |
| Thomas Dougan | H.J. Laughlin | J. Standeven |
| Ethel Drew | Hugh Laughlin | Joyce Stubbs |
| Evan Edmondson | P.E. Laughlin | Rob Thomas |
| L. Elgert | Beverly J. Lawrie | Muriel Thompson |
| Walter Elliott | L. Linnen | R.E. Tourand |
| Daphne Elwood | Machine 1 Enterprises | Edna Trytko |
| Ann Epp | Elizabeth L. Mager | Janet Tyson |
| Madge Farmer | L. Marienhoff | Elva Ward |
| G. Fisher | G.J. Matches | Ethel Webb |
| Mr. & Mrs. D. Fitzpatrick | V.G. McIntyre | Bud Wheeler |
| William Fridleifson | George McDonald | Wraytons Three B Farms |
| H. Froese | Mrs. L. McDonald | T.R. Yearsley |
| Fjola Galloway | Janet McMillan | Max Zack |
| Mr. R. Gardner | | |

Donations were made in Memory of the following people:

| | | |
|--------------------|--------------------|-----------------------|
| Mrs. Jean Bignell | Boris Galinski | Clifford Laughlin |
| Albert Breriton | Catherine Hamblett | Walter Parry |
| Derek Buchanan | Peter Hamm | Eve Pawson |
| Chris Budil | Ida Hansen | Tom Raper |
| Barry Cook | Norma Karikstad | Christopher E. Scales |
| B.J. Deane-Freeman | Brock Kilfoyle | Arthur Schiable |
| | | George Stretch |

Many thanks to the following companies who donated to us throughout the year:

| | |
|--|--|
| Bon Street Development | Pacific Cedar Yard Products |
| Care Medical Supplies | Pioneer Envelopes Limited |
| Coopers & Lybrand | Roho International |
| Cottonette - Leigh Morgan Fashions Inc. | E. Roko Distributors Ltd. |
| Dairyland | Status Electrical Corporation |
| Delta Credit Union | Surrey Credit Union |
| Doig, Baily, McLean, Greenback and Murdoch | The Jolly Woodsman Pub |
| Edelweiss Credit Union | Trans National Art Corporation |
| Four C. Aluminum | Treen Gloves and Safety Products |
| Great Valleys Radio | Tri-Pyramid Industries Limited |
| Garaventa (Canada) Ltd. | David R. Way |
| Imperial Oil | Western Stevedoring |
| Maple Ridge Community Credit Union | Westminster Credit Union |
| Moonbeam Holdings | Workers' Compensation Board, Maintenance |
| MacDonald Cedar Division | Crew, Technical Services |
| Nacan Products Ltd. | Yic's Restaurant |
| Orthotech Management | |

We are most grateful for the continuing support of the following groups:

| | |
|--|--|
| Auxiliary to B.P.O. Elks Order of the Royal Purple #135 | Pythian Cerebral Palsy Committee |
| Auxiliary to Lower Fraser Valley Cerebral Palsy Association | Ronald McDonald Children's Charities |
| B.C. Hydro Employee Welfare Fund | Rotary Club of Burnaby (Metrotown) |
| B.C. Sledge Hockey & Ice Pick | Royal Canadian Legion, Ladies' Auxiliary Branch No. 175 |
| Canadian Airlines International Charitable Donation Fund | Royal Canadian Legion #229 - Whalley |
| C.K.N.W. Orphan's Fund | Schmidt Family Foundation |
| Delta Municipal Police Association | Son's of Norway Foundation - Viking Lodge #81 |
| Delta Sungod Swim Club | Spina Bifida Association of B.C. |
| Dogwood Lioness Club - North Delta | Sullivan Volunteer Fire Hall |
| Fraser Valley Orchid Society | Surrey Fire Department |
| Ladner Lions Club | Surrey Square Wheelers |
| Learning Disabilities Association of British Columbia | T.N.T. Four Wheelers |
| Marpole Richmond Sportsman Association | Telephone Employee's Community Fund |
| Order of the Royal Purple Ladies of North Surrey Lodge 249 | United Way of the Fraser Valley |
| Order of Elks Cloverdale Lodge #335 | Upper Fraser Valley Neurological Society |
| Order of Elks Langley Lodge #259 | Van Zor Grotto |
| | Variety Club of British Columbia |
| | Wheeling Eights Square Dance Club |
| | Women's Auxiliary to Tynehead Hall |

Donors who designated contributions through United Way:

Employees of:

| | |
|---|---|
| Arthur Andersen Consulting | Industries Corp. |
| B.C. Buildings Corporation | Kwantlen College |
| B.C. Gas Incorporated | Lower Fraser Valley Cerebral Palsy Association |
| B.C. Transit, Burnaby Overhaul | MPR Teltech |
| B.C. Transit, Oakridge Transit Centre | North Vancouver School District #44 |
| Benndorf-Verster Limited | Peace Arch District Hospital |
| Bull Houser & Tupper | Petro-Canada Products, Port Moody Refinery |
| Burnaby School District #41 | Phillips Cables Limited, Plant |
| Canada Post Corporation - Zone B Surrey-White Rock-Delta-Langley | Prism Systems Incorporated |
| Canada Post Corporation - Zone D Vancouver City Services | R.C.M.P. "E" Division Headquarters |
| Canada Trust | Revenue Canada, Customs - Pacific Highway District |
| Canadian Aircraft Products Limited | Revenue Canada, Customs - Regional District |
| Cloverdale Paint Incorporated | Revenue Canada - Surrey Taxation Centre |
| Colliers Macaulay Nicolls Incorporated | Russell & DuMoulin |
| Cominco Engineering Services | Sauder Industries Limited, Door Division |
| Corporation of the Township of Langley | Sauder Industries Limited |
| Dairyland Foods | Scott Paper Limited |
| Employment and Immigration Canada | Sierra Systems Consultants Incorporated |
| Fletcher Challenge Canada, Albion Centre | Surrey Credit union |
| Flexpak International Corporation | Tilbury Cement Limited |
| Four Seasons Hotel | Transport Canada, Policy and Coordination |
| Freightliner of Canada Limited | University of British Columbia |
| Greater Vancouver Regional District | Vancouver City Savings |
| H.A. Simons Limited | Vancouver Neurological Centre |
| Insurance Corporation of British Columbia | West Coast Reduction Limited |
| Keen Engineering Limited | West Fraser Timber Company Limited |
| Keystone Business Forms, Division of Paperboard | Wright Engineering Limited |
| | Y.M.C.A. Greater Vancouver |

Employee Trust Funds designated through United Way:

Bank of Montreal Employee Charities Fund
C I B C
Eaton's Employees Charity Trust, Service Building & Warehouse
Fletcher Challenge Canada, Head Office
Provincial Employees Community Services Fund - Liquor Distribution Branch
Royal Bank of Canada

Corporate Gifts from:

ICL Engineering Limited
Western Assembly Limited

Individual donations designated through United Way:

| | |
|--------------------------------------|----------------------|
| Mrs. George Copeland | Mrs. G. Macdonald |
| F. Fennell | Mrs. Barbara Schaab |
| Mr. Robert C. D. Fitzpatrick | T. Schootman |
| Dr. J. Frohlich, University Hospital | Frieda Wilson |
| Stephen G. Herman | Mrs. Carol Woodworth |
| Miss Fanny A. Kennedy | |

Bequests were received from the Estates of:

Bethia Bevan
Rebecca M. Isaacs
V. Hemer
Dorothy Lemon

Thank you to friends who supported our:

Slide-A-Thon June 1990
Swim-A-Thon
Preschool Walk-A-Thon

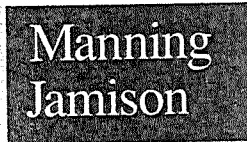
Operating Funds are received from:

Ministry of Social Services and Housing
Ministry of Health
United Way of the Lower Mainland

LOWER FRASER VALLEY CEREBRAL
PALSY ASSOCIATION

FINANCIAL STATEMENTS

MARCH 31, 1991



CHARTERED ACCOUNTANTS

Suite 210
15225-104 Avenue
Surrey, B.C.
V3R 6Y8

Telephone
(604) 588-4491
Facsimile
(604) 585-6255

AUDITORS' REPORT

To the Members of
LOWER FRASER VALLEY CEREBRAL PALSY ASSOCIATION

We have audited the balance sheet of LOWER FRASER VALLEY CEREBRAL PALSY ASSOCIATION as at March 31, 1991 and the statements of capital surplus, revenue, expenses and operating surplus, changes in cash resources and schedules of operations for the year then ended. These financial statements are the responsibility of the Association's management. Our responsibility is to express an opinion on these financial statements based on our audit.

Except as explained in the following paragraph we conducted our audit in accordance with generally accepted auditing standards. Those standards require that we plan and perform an audit to obtain reasonable assurance whether the financial statements are free of material misstatement. An audit includes examining, on a test basis, evidence supporting the amounts and disclosures in the financial statements. An audit also includes assessing the accounting principles used and significant estimates made by management, as well as evaluating the overall financial statement presentation.

In common with many charitable organizations, the Association derives revenue from donations and fund-raising, the completeness of which is not susceptible to satisfactory audit verification. Accordingly, our verification of these receipts was limited to the amounts recorded in the records of the Association and we were not able to determine whether any adjustments might be necessary to donation or fund-raising receipts, excess of revenue over expenses, assets and surplus.

In our opinion, except for the effect of adjustments, if any, which we might have determined to be necessary had we been able to satisfy ourselves concerning the completeness of the donations and fund-raising referred to in the preceding paragraph, these financial statements present fairly, in all material respects, the financial position of the Association as at March 31, 1991, and the results of its operations and the changes in its cash resources for the year then ended in accordance with accounting principles as explained in Note 1 to the financial statements. As required by the Society Act of British Columbia, we report that, in our opinion, these principles have been applied, on a basis consistent with that of the preceding year.

A handwritten signature in cursive script that reads "Manning Jamison".

Chartered Accountants

Surrey, British Columbia

June 14, 1991

LOWER FRASER VALLEY CEREBRAL
PALSY ASSOCIATION

BALANCE SHEET

MARCH 31, 1991

| | ASSETS | |
|---|---------------------|---------------------|
| | <u>1991</u> | <u>1990</u> |
| CURRENT ASSETS | | |
| Cash | \$ 431,653 | \$ 359,987 |
| Term deposits | 245,062 | - |
| Accounts receivable | 166,636 | 243,361 |
| Prepaid expenses | 9,838 | 12,711 |
| | ----- | ----- |
| Total current assets | 853,189 | 616,059 |
| | ----- | ----- |
| ENDOWMENT FUND TERM DEPOSITS | 375,000 | 325,000 |
| | ----- | ----- |
| LAND, BUILDINGS, EQUIPMENT & FURNITURE (Note 2) | 3,568,033 | 3,335,940 |
| | ----- | ----- |
| | <u>\$ 4,796,222</u> | <u>\$ 4,276,999</u> |
| | ----- | ----- |
| LIABILITIES | | |
| CURRENT LIABILITIES | | |
| Accounts payable and accrued liabilities (Note 3) | \$ 291,271 | \$ 188,318 |
| Revenue received in advance | 3,834 | - |
| Current portion of long-term debt | 5,699 | 76,420 |
| | ----- | ----- |
| Total current liabilities | 300,804 | 264,738 |
| | ----- | ----- |
| LONG-TERM DEBT (Note 4) | 741,416 | 386,972 |
| | ----- | ----- |
| DEFERRED CAPITAL GRANTS (Note 1 (e)) | 1,447,123 | 1,517,716 |
| | ----- | ----- |
| FUNDED RESERVE | | |
| REPLACEMENT RESERVE (Note 5) | 34,255 | 28,034 |
| | ----- | ----- |
| SURPLUS | | |
| Endowment fund (Note 6) | 375,000 | 325,000 |
| Capital | 1,760,335 | 1,662,552 |
| Operating | 137,289 | 91,987 |
| | ----- | ----- |
| | 2,272,624 | 2,079,539 |
| | ----- | ----- |
| | <u>\$ 4,796,222</u> | <u>\$ 4,276,999</u> |
| | ----- | ----- |

Approved by the Directors:

.....  Director

.....  Director

LOWER FRASER VALLEY CEREBRAL
PALSY ASSOCIATION

STATEMENT OF CAPITAL SURPLUS

YEAR ENDED MARCH 31, 1991

| | <u>1991</u> | <u>1990</u> |
|--------------------------------------|---------------------|---------------------|
| CAPITAL SURPLUS AT BEGINNING OF YEAR | \$ 1,662,552 | \$ 1,784,141 |
| | ----- | ----- |
| ADD: | | |
| Donations | 244,029 | 140,846 |
| Amortization of capital grants | 73,285 | 77,142 |
| Proceeds on land sale | - | 27,369 |
| | ----- | ----- |
| | 317,314 | 245,357 |
| | ----- | ----- |
| DEDUCT: | | |
| Transfer to endowment fund | 50,000 | 200,000 |
| Depreciation | 169,531 | 166,946 |
| | ----- | ----- |
| | 219,531 | 366,946 |
| | ----- | ----- |
| CAPITAL SURPLUS AT END OF YEAR | <u>\$ 1,760,335</u> | <u>\$ 1,662,552</u> |

LOWER FRASER VALLEY CEREBRAL
PALSY ASSOCIATION

STATEMENT OF REVENUE, EXPENSES AND OPERATING SURPLUS

YEAR ENDED MARCH 31, 1991

| | <u>1991</u> | <u>1990</u> |
|--|-------------------|------------------|
| REVENUE | | |
| Variety Child Development Centre (Schedule A) | \$ 2,490,162 | \$ 2,072,867 |
| Adult Services Group Homes Division (Schedule B) | 654,150 | 248,837 |
| Children's Group Homes Division (Schedule C) | 514,715 | 511,460 |
| Lookout Preschool (Schedule D) | 154,236 | 133,531 |
| | ----- | ----- |
| Total revenue | 3,813,263 | 2,966,695 |
| | ----- | ----- |
| EXPENSES | | |
| Variety Child Development Centre (Schedule A) | 2,491,184 | 2,072,894 |
| Adult Services Group Homes Division (Schedule B) | 601,368 | 235,245 |
| Children's Group Homes Division (Schedule C) | 520,151 | 482,348 |
| Lookout Preschool (Schedule D) | 160,258 | 143,887 |
| | ----- | ----- |
| Total expenses | 3,772,961 | 2,934,374 |
| | ----- | ----- |
| EXCESS OF REVENUE OVER EXPENSES | 40,302 | 32,321 |
| OPERATING SURPLUS AT BEGINNING OF YEAR | 91,987 | 59,666 |
| PAYMENT FROM PROVINCE OF B.C. TO REDUCE LOOKOUT PRESCHOOL OPERATING DEFICIT | 5,000 | - |
| | ----- | ----- |
| OPERATING SURPLUS AT END OF YEAR | \$ <u>137,289</u> | \$ <u>91,987</u> |

LOWER FRASER VALLEY CEREBRAL
PALSY ASSOCIATION

STATEMENT OF CHANGES IN CASH RESOURCES

YEAR ENDED MARCH 31, 1991

| | <u>1991</u> | <u>1990</u> |
|---|---------------------|-------------------|
| CASH PROVIDED BY (USED FOR): | | |
| OPERATING ACTIVITIES | | |
| Excess of revenue over expenses | \$ 40,302 | \$ 32,321 |
| Add: Items not affecting cash | | |
| Depreciation | 15,199 | 11,161 |
| Change in replacement reserve | 6,221 | 2,168 |
| | ----- | ----- |
| | 61,722 | 45,650 |
| Net change in non-cash working capital balances relating to operations | 186,388 | (83,800) |
| | ----- | ----- |
| | 248,110 | (38,150) |
| | ----- | ----- |
| FINANCING ACTIVITIES | | |
| Capital grants (net of amortization) | 2,692 | 391,518 |
| Increase in long-term debt | 285,878 | 251,500 |
| Donations to capital fund | 244,029 | 140,846 |
| Repayment of long-term debt | (2,156) | (3,597) |
| Payment from Province of B.C. to reduce operating deficit | 5,000 | - |
| | ----- | ----- |
| | 535,443 | 780,267 |
| | ----- | ----- |
| INVESTING ACTIVITIES | | |
| Purchase of land, building and equipment - Newton Place | (295,835) | (311,609) |
| Purchase of equipment and furniture | (120,990) | (37,278) |
| Building expansion | - | (172,078) |
| Payment to Vancouver Foundation | - | (100,000) |
| Proceeds on sale of land | - | 27,369 |
| | ----- | ----- |
| | (416,825) | (593,596) |
| | ----- | ----- |
| INCREASE IN CASH RESOURCES | 366,728 | 148,521 |
| CASH RESOURCES AT BEGINNING OF YEAR | 684,987 | 536,466 |
| | ----- | ----- |
| CASH RESOURCES AT END OF YEAR | \$ <u>1,051,715</u> | \$ <u>684,987</u> |
| CASH RESOURCES AT END OF YEAR CONSIST OF: | | |
| Cash | \$ 431,653 | \$ 359,987 |
| Term deposits | 245,062 | - |
| Endowment fund term deposits | 375,000 | 325,000 |
| | ----- | ----- |
| | \$ <u>1,051,715</u> | \$ <u>684,987</u> |

LOWER FRASER VALLEY CEREBRAL
PALSY ASSOCIATION

NOTES TO FINANCIAL STATEMENTS

MARCH 31, 1991

1. SUMMARY OF SIGNIFICANT ACCOUNTING POLICIES

(a) Operations

In November 1990 the Association opened the Newton Home at 7109 - 144th Street, Surrey, B.C. This Adult Services Group Home houses four residents.

(b) Depreciation of Buildings

The Variety Child Development Centre and Lookout Preschool buildings are depreciated using the declining balance method at an annual rate of 5% except that the donated portion of the Lookout Preschool building is not depreciated. Adult Services and Children's Group Homes buildings are depreciated at an amount equal to the annual principal reduction in the related mortgages payable. Depreciation is charged to capital surplus in all divisions except Adult Services. The policies for Adult Services and Children's Group Home buildings are required by Canada Mortgage and Housing Corporation and B.C. Housing Management Commission.

(c) Depreciation of Furniture and Equipment

Furniture and equipment for all divisions except 88th Avenue and Guildford Glen Group Homes (Adult Services) are depreciated using the straight line method at an annual rate of 20%. Furniture and equipment in 88th Avenue and Guildford Glen Group Homes are not depreciated. A replacement reserve is maintained by these facilities to provide for future asset replacement.

(d) Endowment Fund

The Association has established an endowment fund from capital surplus. The purpose of this endowment fund is to provide investment income for the operation of the Child Development Centre.

(e) Deferred Capital Grants

Grants received in respect of additions to buildings, furniture and equipment are initially recorded in the balance sheet as deferred capital grants and are amortized in the same manner as the related assets.

(f) Replacement Reserve

The replacement reserve account is funded by an annual charge against earnings as opposed to an appropriation of surplus.

LOWER FRASER VALLEY CEREBRAL
PALSY ASSOCIATION

NOTES TO FINANCIAL STATEMENTS

MARCH 31, 1991

2. LAND, BUILDINGS, EQUIPMENT AND FURNITURE

| | | 1991 | | | 1990 |
|--------------------------------------|-------------|-------------------------------------|-------------------------------|----|-------------------------------|
| | <u>Cost</u> | <u>Accumulated Depreciation</u> | <u>Net Book Value</u> | | <u>Net Book Value</u> |
| (a) Variety Child Development Centre | | | | | |
| Land - 140th Street \$ | 24,017 | \$ - | \$ 24,017 | \$ | 24,017 |
| Building - 140th Street | 2,811,000 | 460,603 | 2,350,397 | | 2,462,560 |
| Clinic and preschool equipment | 243,277 | 163,729 | 79,548 | | 21,072 |
| Office equipment | 126,317 | 95,231 | 31,086 | | 21,606 |
| Automotive equipment | 109,345 | 99,881 | 9,464 | | 11,489 |
| Land held for future development | 56,029 | - | 56,029 | | 56,029 |
| Land - Thrift Store | 50,823 | - | 50,823 | | 50,823 |
| | 3,420,808 | 819,444 | 2,601,364 | | 2,647,596 |
| (b) Adult Services Group Homes | | | | | |
| Land | 209,100 | - | 209,100 | | 102,100 |
| Building | 427,363 | 13,761 | 413,602 | | 246,061 |
| Furniture | 41,954 | 11,892 | 30,062 | | 18,773 |
| Automotive equipment | 25,995 | 10,398 | 15,597 | | 20,796 |
| | 704,412 | 36,051 | 668,361 | | 387,730 |
| (c) Children's Group Homes | | | | | |
| Old Yale Road | | | | | |
| Land | 24,816 | - | 24,816 | | 24,816 |
| Building | 72,187 | 3,419 | 68,768 | | 69,250 |
| Equipment & furniture | 13,769 | 13,319 | 450 | | 600 |
| | 110,772 | 16,738 | 94,034 | | 94,666 |

LOWER FRASER VALLEY CEREBRAL
PALSY ASSOCIATION

NOTES TO FINANCIAL STATEMENTS

MARCH 31, 1991

2. LAND, BUILDINGS, EQUIPMENT AND FURNITURE (continued)

| | 1991 | | | 1990 |
|---------------------------|--------------------|---------------------|--------------|--------------|
| <u>Cost</u> | <u>Accumulated</u> | <u>Depreciation</u> | <u>Net</u> | <u>Net</u> |
| | | | <u>Book</u> | <u>Book</u> |
| | | | <u>Value</u> | <u>Value</u> |
| Children's Villa | | | | |
| Land | 25,000 | - | 25,000 | 25,000 |
| Building | 130,985 | 11,563 | 119,422 | 121,095 |
| Equipment & furniture | 12,939 | 12,301 | 638 | 851 |
| | ----- | ----- | ----- | ----- |
| | 168,924 | 23,864 | 145,060 | 146,946 |
| | ----- | ----- | ----- | ----- |
| | 279,696 | 40,602 | 239,094 | 241,612 |
| | ----- | ----- | ----- | ----- |
| (d) Lookout Preschool | | | | |
| Building | 76,941 | 19,389 | 57,552 | 59,002 |
| Equipment & furniture | 5,384 | 3,722 | 1,662 | - |
| | ----- | ----- | ----- | ----- |
| | 82,325 | 23,111 | 59,214 | 59,002 |
| | ----- | ----- | ----- | ----- |
| | \$ 4,487,241 | \$ 919,208 | \$ 3,568,033 | \$ 3,335,940 |
| | ----- | ----- | ----- | ----- |

3. ACCOUNTS PAYABLE AND ACCRUED LIABILITIES

The Association's employment contract requires payment of 50% of accumulated sick leave credits upon termination of employment where an employee was a member of the Health Sciences Association of B.C. and was employed by Lower Fraser Valley Cerebral Palsy Association prior to 1982. Accounts payable and accrued liabilities of \$291,271 (1990 - \$188,318) include \$58,786 (1990 - \$48,520) of accumulated sick leave. The Association does not provide for future sick leave credits that may be paid to other unionized employees or to non-unionized employees.

4. LONG-TERM DEBT

| | 1991 | 1990 |
|--|------------|------------|
| Firstline Trust Company | | |
| Mortgage payable at \$2,296 per month including principal plus 10.95% interest; due January 1, 1995; secured by the property at 8833 - 158th Street, Surrey, B.C., known as Parkland View Group Home | \$ 250,679 | \$ 251,389 |

LOWER FRASER VALLEY CEREBRAL
PALSY ASSOCIATION

NOTES TO FINANCIAL STATEMENTS

MARCH 31, 1991

4. LONG-TERM DEBT (continued)

| | <u>1991</u> | <u>1990</u> |
|--|-------------|-------------|
| Firstline Trust Company | | |
| Mortgage payable at \$2,871 per month including principal plus 12% interest; due November 1, 1995; secured by the property at 7109 - 144th Street, Surrey, B.C., known as Newton Place Group Home | 288,035 | - |
| Canada Mortgage and Housing Corporation | | |
| Mortgage payable at \$683 per month including principal plus 8% interest; due October 1, 2012; secured by the property at 13799 - 88 Ave., Surrey, B.C. | 85,014 | 86,460 |
| Bank of Nova Scotia | | |
| Mortgage payable at \$889 per month including principal plus 12.75% interest; due December 1, 1995; secured by the property at 9141 - 140 St., Surrey, B.C. known as the Variety's Children's Villa. | 71,976 | 73,650 |
| Canada Mortgage and Housing Corporation | | |
| Mortgage payable at \$503 per month including principal plus 11% interest; due April 1, 2014; secured by the property at 12833 - 106 Ave., Surrey, B.C. known as Old Yale Road Group Home. | 51,411 | 51,893 |
| | 747,115 | 463,392 |
| Less: Due within one year | 5,699 | 76,420 |
| | \$ 741,416 | \$ 386,972 |

Principal repayments required are as follows:

| | |
|---------------------|------------|
| 1992 | \$ 5,699 |
| 1993 | 6,338 |
| 1994 | 7,051 |
| 1995 | 7,846 |
| 1996 and subsequent | 720,181 |
| | \$ 747,115 |

The calculation of these payments assumes that mortgages due prior to 1996 will be renewed at similar terms and conditions.

LOWER FRASER VALLEY CEREBRAL
PALSY ASSOCIATION

NOTES TO FINANCIAL STATEMENTS

MARCH 31, 1991

5. REPLACEMENT RESERVE

| | <u>1991</u> | <u>1990</u> |
|------------------------------|------------------|------------------|
| Balance at beginning of year | \$ 28,034 | \$ 25,866 |
| Provision for year | 5,438 | 2,697 |
| Interest income | 2,766 | 2,468 |
| Less capital expenditures | (1,983) | (2,997) |
| | ----- | ----- |
| Balance at end of year | <u>\$ 34,255</u> | <u>\$ 28,034</u> |

6. ENDOWMENT FUND

| | <u>1991</u> | <u>1990</u> |
|---|-------------------|-------------------|
| Balance at beginning of year | \$ 325,000 | \$ 225,000 |
| Transfer from capital surplus | 50,000 | 200,000 |
| Transfer to Vancouver Foundation (Note 7) | - | (100,000) |
| | ----- | ----- |
| | <u>\$ 375,000</u> | <u>\$ 325,000</u> |

7. VANCOUVER FOUNDATION

The Association is entitled to the income from a permanent endowment fund administered by the Vancouver Foundation. This fund totalled \$610,000 at March 31, 1991 and 1990. Interest on the fund is distributed quarterly to the Association.

LOWER FRASER VALLEY CEREBRAL
PALSY ASSOCIATION
VARIETY CHILD DEVELOPMENT CENTRE

STATEMENT OF OPERATIONS

YEAR ENDED MARCH 31, 1991

| | <u>1991</u> | <u>1990</u> |
|--|-------------------|----------------|
| REVENUE | | |
| Ministry of Health | \$ 839,336 | \$ 713,604 |
| Ministry of Health (Mental Health) | 56,500 | - |
| Ministry of Social Services & Housing | 447,225 | 430,264 |
| Bingo | 331,672 | 313,614 |
| User fees | 257,622 | 189,468 |
| Fundraising and donations | 253,509 | 164,776 |
| Interest and investment | 145,042 | 117,886 |
| United Way | 100,820 | 93,036 |
| Physician's salary grant | 44,154 | 32,558 |
| Canada Works program | 14,282 | 17,661 |
| | ----- | ----- |
| | 2,490,162 | 2,072,867 |
| | ----- | ----- |
| EXPENSES | | |
| Preschool and health program | 1,676,353 | 1,430,240 |
| Bingo | 245,122 | 228,539 |
| Administration | 301,827 | 221,734 |
| Maintenance | 175,206 | 131,935 |
| Fundraising | 92,676 | 57,808 |
| Interest on long-term debt | - | 2,638 |
| | ----- | ----- |
| | 2,491,184 | 2,072,894 |
| | ----- | ----- |
| DEFICIENCY OF REVENUE OVER EXPENSES | \$ (1,022) | \$ (27) |
| | ----- | ----- |

LOWER FRASER VALLEY CEREBRAL PALSY ASSOCIATION
ADULT SERVICES GROUP HOMES DIVISION

STATEMENT OF OPERATIONS

YEAR ENDED MARCH 31, 1991

| | <u>88th Avenue</u> | <u>Guildford Glen</u> | <u>Parkland View</u> | <u>Newton Place</u> | <u>Total 1991</u> | <u>Total 1990</u> |
|--|--------------------|---------------------------|--------------------------|-------------------------|-----------------------|-----------------------|
| REVENUE | | | | | | |
| Ministry of Health | \$ 65,954 | \$ 125,626 | \$ 210,661 | \$ - | \$ 402,241 | \$ 227,378 |
| Ministry of Social Services & Housing | - | - | 30,826 | 152,499 | 183,325 | - |
| B.C. Housing Management Commission | 10,760 | - | 29,053 | 16,609 | 56,422 | 12,708 |
| Rental Revenue | 7,655 | - | - | - | 7,655 | 6,864 |
| Interest | - | 594 | 1,832 | 458 | 2,884 | 1,887 |
| Other fees | - | - | 1,599 | 24 | 1,623 | - |
| | ----- | ----- | ----- | ----- | ----- | ----- |
| Total revenue | 84,369 | 126,220 | 273,971 | 169,590 | 654,150 | 248,837 |
| | ----- | ----- | ----- | ----- | ----- | ----- |
| EXPENSES | | | | | | |
| Shelter | | | | | | |
| Interest | 6,743 | - | 29,080 | 16,758 | 52,581 | 11,335 |
| Administration | 1,006 | - | 1,146 | 521 | 2,673 | 15,432 |
| Property taxes | 1,745 | - | 1,027 | 500 | 3,272 | 2,528 |
| Depreciation | 1,446 | - | 9,144 | 4,609 | 15,199 | 11,161 |
| Amortization of grants | - | - | (9,144) | (4,144) | (13,288) | (9,824) |
| Replacement reserve | 780 | - | 1,691 | 1,096 | 3,567 | 768 |
| Housewares | - | - | 2,567 | 5,090 | 7,657 | 4,247 |
| Utilities | - | - | 1,529 | 1,470 | 2,999 | 741 |
| Maintenance and janitorial | 4,074 | - | 2,802 | 887 | 7,763 | 988 |
| Insurance | 240 | - | 400 | 498 | 1,138 | 350 |
| Audit | 839 | - | 839 | 50 | 1,728 | 263 |
| | ----- | ----- | ----- | ----- | ----- | ----- |
| Total shelter | 16,873 | - | 41,081 | 27,335 | 85,289 | 37,989 |
| | ----- | ----- | ----- | ----- | ----- | ----- |
| Care | | | | | | |
| Salaries and benefits | 52,384 | 114,751 | 163,445 | 89,756 | 420,336 | 168,977 |
| Administration | 8,588 | 8,268 | 17,644 | 14,851 | 49,351 | 16,968 |
| Professional services | - | - | 8,920 | 5,915 | 14,835 | 1,840 |
| Transportation | 2,046 | 1,470 | 4,002 | 914 | 8,432 | 5,086 |
| Supplies | - | 277 | 4,408 | 2,481 | 7,166 | 1,409 |
| Food | - | - | 8,216 | 3,277 | 11,493 | 1,239 |
| Audit | 702 | 860 | 852 | - | 2,414 | 1,737 |
| Spending and recreation | - | - | 1,340 | 712 | 2,052 | - |
| | ----- | ----- | ----- | ----- | ----- | ----- |
| Total care | 63,720 | 125,626 | 208,827 | 117,906 | 516,079 | 197,256 |
| | ----- | ----- | ----- | ----- | ----- | ----- |
| TOTAL EXPENSES | 80,593 | 125,626 | 249,908 | 145,241 | 601,368 | 235,245 |
| | ----- | ----- | ----- | ----- | ----- | ----- |
| EXCESS OF REVENUE OVER EXPENSES | \$ 3,776 | \$ 594 | \$ 24,063 | \$ 24,349 | \$ 52,782 | \$ 13,592 |
| | ----- | ----- | ----- | ----- | ----- | ----- |

LOWER FRASER VALLEY CEREBRAL
PALSY ASSOCIATION
CHILDREN'S GROUP HOMES DIVISION

STATEMENT OF OPERATIONS

YEAR ENDED MARCH 31, 1991

| | Old Yale Road <u>Residence</u> | Variety's Children's <u>Villa</u> | Total <u>1991</u> | Total <u>1990</u> |
|---|--------------------------------------|---|----------------------|----------------------|
| REVENUE | | | | |
| Ministry of Social Services and Housing | \$ 223,469 | \$ 229,851 | \$ 453,320 | \$ 457,192 |
| Canada Mortgage and Housing Corporation | 4,241 | 12,379 | 16,620 | 15,696 |
| Maintenance | 24,455 | 12,530 | 36,985 | 35,038 |
| Interest | 3,360 | 4,430 | 7,790 | 3,534 |
| | ----- | ----- | ----- | ----- |
| Total revenue | 255,525 | 259,190 | 514,715 | 511,460 |
| | ----- | ----- | ----- | ----- |
| EXPENSES | | | | |
| Salaries and benefits | 190,741 | 190,813 | 381,554 | 348,711 |
| Administration | 28,068 | 26,940 | 55,008 | 53,880 |
| Food | 7,621 | 7,370 | 14,991 | 15,866 |
| Supplies | 6,818 | 5,518 | 12,336 | 12,542 |
| Transportation | 3,961 | 3,358 | 7,319 | 7,340 |
| Interest | 5,620 | 8,866 | 14,486 | 13,823 |
| Property taxes | 1,257 | 2,173 | 3,430 | 4,318 |
| Spending, gifts and recreation | 3,138 | 2,702 | 5,840 | 5,756 |
| Utilities | 2,667 | 2,854 | 5,521 | 5,153 |
| Furniture and equipment | 1,343 | 983 | 2,326 | 1,992 |
| Repairs and maintenance | 4,423 | 4,116 | 8,539 | 3,892 |
| Audit | 850 | 1,109 | 1,959 | 1,832 |
| Clothing | 1,451 | 974 | 2,425 | 2,396 |
| Staff development | 1,089 | 599 | 1,688 | 2,006 |
| Replacement reserve | 900 | 1,041 | 1,941 | 1,929 |
| Office supplies | 370 | 160 | 530 | 690 |
| Insurance | 108 | 150 | 258 | 222 |
| | ----- | ----- | ----- | ----- |
| Total expenses | 260,425 | 259,726 | 520,151 | 482,348 |
| | ----- | ----- | ----- | ----- |
| EXCESS (DEFICIENCY) OF REVENUE OVER EXPENSES | \$ (4,900) | \$ (536) | \$ (5,436) | \$ 29,112 |
| | ----- | ----- | ----- | ----- |

LOWER FRASER VALLEY CEREBRAL
PALSY ASSOCIATION
LOOKOUT PRESCHOOL DIVISION

STATEMENT OF OPERATIONS

YEAR ENDED MARCH 31, 1991

| | <u>1991</u> | <u>1990</u> |
|---|-------------------|-------------------|
| REVENUE | | |
| Ministry of Social Services and Housing | \$ 119,000 | \$ 103,787 |
| Fees | 29,477 | 26,028 |
| Interest | 655 | 1,631 |
| Donations and fundraising | 5,104 | 2,085 |
| | ----- | ----- |
| Total revenue | 154,236 | 133,531 |
| | ----- | ----- |
| EXPENSES | | |
| Salaries and benefits | 133,288 | 117,624 |
| Administration | 13,368 | 13,368 |
| Supplies | 2,786 | 3,575 |
| Equipment purchase and maintenance | 4,105 | 3,140 |
| Telephone and utilities | 2,340 | 2,288 |
| Office and postage | 290 | 1,386 |
| Insurance and property taxes | 829 | 859 |
| Audit | 2,438 | 725 |
| Staff education | 520 | 697 |
| Travel | 294 | 125 |
| Bad debts | - | 100 |
| | ----- | ----- |
| Total expenses | 160,258 | 143,887 |
| | ----- | ----- |
| DEFICIENCY OF REVENUE OVER EXPENSES | \$ (6,022) | \$ (10,356) |
| | <u> </u> | <u> </u> |